

INVERTED FLUORESCENCE MICROSCOPE IMF-3200 SERIES



Inverted Fluorescence Microscope IMF-3200 Series deals with the flexibility and power that user needs to advance their work along with high-resolution cameras, and vivid 6V/30W Halogen lamp illumination and 100W HBO Ultra Hi-voltage Spherical Mercury Lamp as a light source, these inverted systems are highly flexible and fit perfectly for user laboratory needs. Ideal for cell culture used in universities, hospitals and life science labs for disease examination, immune diagnosis and scientific research. Equipped with trinocular viewing head and different filters including Blue, Green and Ground glass filters. It is a significant instrument finished to a high standard. High performance, long working distance Infinite Plan Achromatic objectives are fitted as standard with a reversed quintuple nosepiece and Extra Long Working Distance NA 0.3 of length 72 mm condenser. Features with 10×/0.25, 6 mm, 20×/0.4, 3.1mm, 40×/0.55, 2.2 mm high-level phase contrast objective with a corresponding phase plate and focusing Centering telescope of length 30 mm is included as standard. Provide tremendous fluorescent image with high resolution fluorescent objectives including LWD Infinite Plan Achromatic, High Level Phase Contrast objective, and backward quintuple nosepiece. Designed with 100W HBO Ultra Hi-voltage Spherical Mercury, 6V/30W Halogen Lamp Kohler Illumination fluorescents lamp. Advantage of HBO mercury lamp: various spectral peaks, incoherent source, reasonable price, and compact light emitting surface. Equipped with excitation filter for incoming light and emitted filters for emitted light and dichroic mirror to reflect the excitation light to the sample and instantaneously transmit only the emitted light from the sample back to the detector.

Features

- ◆ Centering Telescope of length 30 mm
- ◆ Extra wide field WF10×/ 20 mm eyepieces
- ◆ Coaxial coarse and fine adjustment and fine division: 0.002mm, Moving Range up 4.5mm, down 4.5mm
- ◆ Plain stage of 230×170 mm, glass insert plate, attachable mechanical stage, x,y coaxial control, moving range of length 80×120 mm, auxiliary stages 70×180 mm with terasaki holder, petri dish holder of length 38 mm, and 54 mm
- ◆ ELWD Condenser NA 0.3, LWD 72 mm
- ◆ 6V/30W halogen lamp light source
- ◆ Different filters including Blue, Green and Ground glass filters
- ◆ Trinocular 45° inclined and a 360° rotatable head with interpupillary distance 48 to 75 mm
- ◆ Small foot print and light weight
- ◆ Easy operating with ergonomic design
- ◆ Excellent image quality with infinite optical system
- ◆ Optional accessories Photo Adapter, 0.5× C-mount, Modulation Contrast
- ◆ 5W LED Kohler Illumination Halogen lamp as an optional accessories

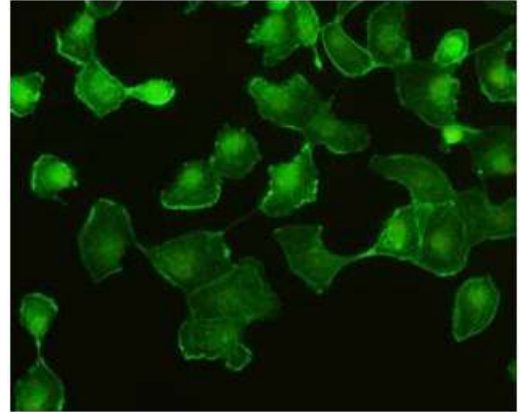
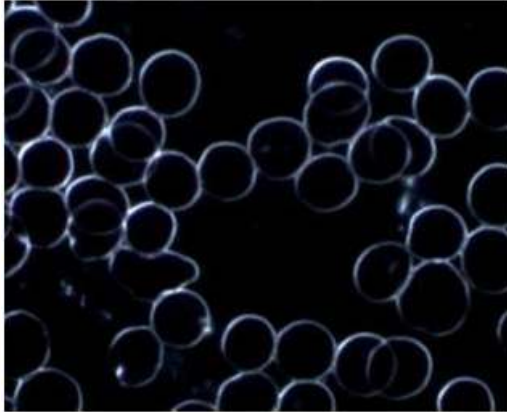


Inverted Fluorescent Attachments

Technical Specifications

Model	IMF-3200
Type	Inverted Fluorescence Microscope
Viewing Head	Trinocular Viewing Head, Inclined at 45°, 360° Rotatable, Interpupillary Distance 48-75mm
Phase Annular	10×, 20×, 40× Phase Annular Plate(Center Adjustable)
Reflected Light Source	Blue: 460 to 490 nm excitation, 500 Dichroic Mirror, 520 Barrier Filter; Green: 480 to 550 nm excitation, 570 Dichroic Mirror, 590 Barrier Filter(optional: UV: 330 to 385 excitation, 400 Dichroic Mirror, 420 Barrier Filter; V: 400 to 410 nm excitation, 455 Dichroic Mirror, 455 Barrier Filter; Red: 620 to 650 nm excitation, 660 Dichroic Mirror, 670 to 750 Barrier Filter)
Optical System	Infinite
Focusing	Coaxial Coarse and Fine Adjustment, Fine Division 0.002mm, Moving Range up 4.5mm, down 4.5mm
Eyepiece	Wide Field Eyepiece WF10×/ 20mm, Eyepiece Tube Diameter 30mm(optional: WF15×/ 16mm, WF20×/ 12mm)
Nosepiece	Backward Quintuple
Objective	LWD(Long Working Distance): 10×/ 0.25, 6mm, 20×/ 0.4, 3.1mm, Infinite Plan Achromatic: 40×/ 0.55, 2.2 mm(optional: High Level Phase Contrast: 10×/ 0.25, 6mm, 20×/ 0.4, 3.1mm, 40×/ 0.55, 2.2mm)
Condenser	ELWD(Extra Long Working Distance) Condenser NA 0.3, LWD 72mm (Without Condenser 150mm)
Telescope	Centering Telescope(30 mm)
Stage	Plain Stage 230×170mm, Glass Insert Plate, Attachable Mechanical Stage, X,Y Coaxial Control, Moving Rang 80mm×120mm, Auxiliary Stages 70mm×180mm, Terasaki Holder, Petri Dish Holder 38mm, Petri Dish Holder 54mm
Light Source	6V/30W Halogen Lamp(optional: LED lamp 5W)
Mirror	
Filter	Blue, Green and Ground Glass, Diameter 45mm
Certification	
Accessories	100W HBO Ultra Hi-voltage Spherical Mercury Lamp, Barrier to Resist the Ultraviolet Light, Power Supplier NFP-1, 220V/ 110V interchangeable, Digital Display, Fluorescent Free Oil
Optional Accessories	Photo Adapter, 0.5× C-mount, Modulation Contrast
Packing Dimension	369x610x620 mm
Packing Weight	6 kg
Electrical Requirement	
Catalogue No.	440125-05-04

Sample Image



Unit Dimension (mm):

